

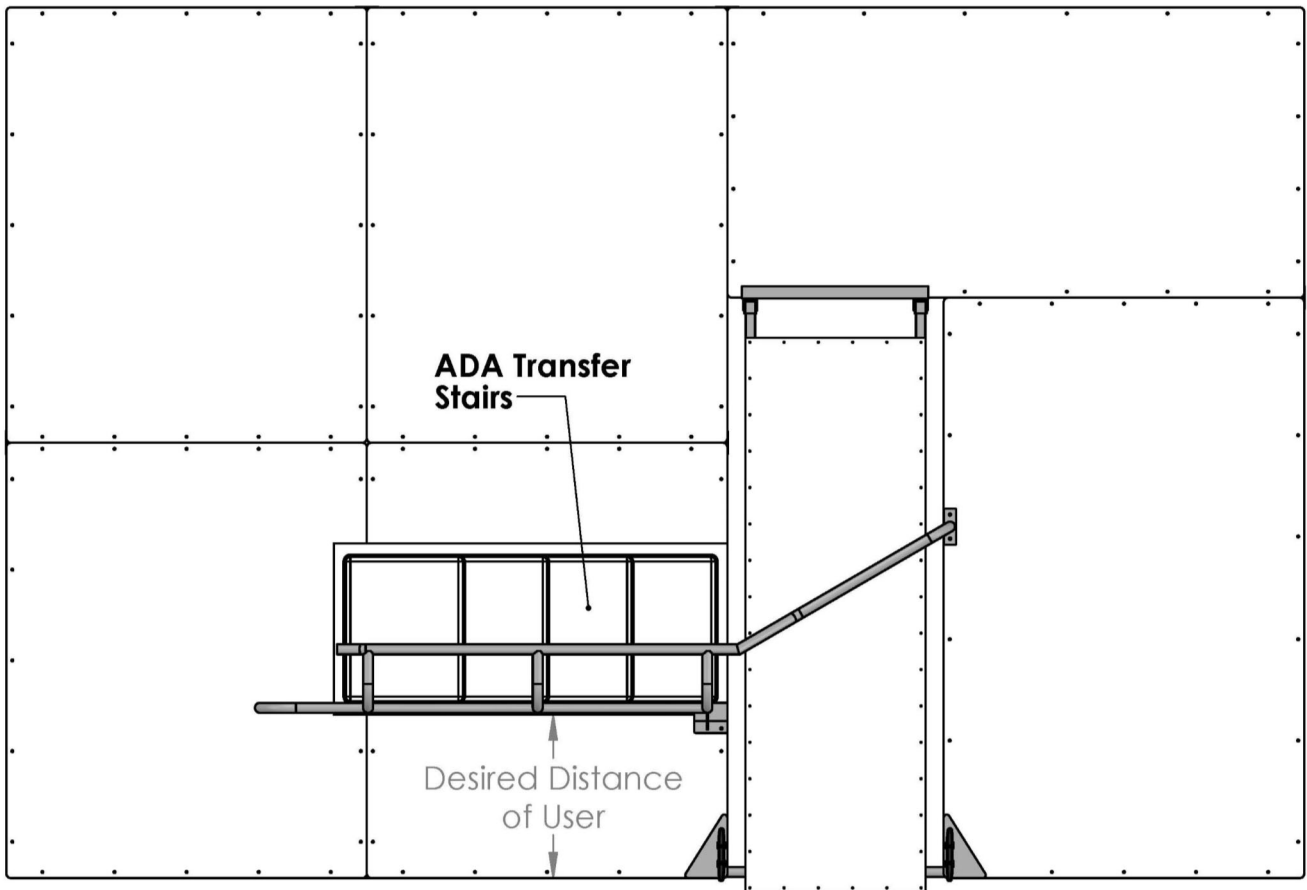


**ADA COMPLIANT
INSTALL INSTRUCTIONS
PAGE DIRECTORY**

ADA TRANSFER STAIRS.....	1-8
ADA TRANSFER STAIRS TO DECKED DOCK.....	9-16



INSTALLATION INSTRUCTIONS



ADA Transfer Stairs

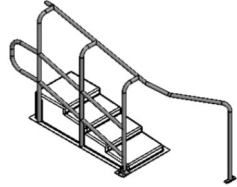




BEFORE INSTALLATION

Thank you for your purchase with AccuDock. Our products have been constructed for durability and designed for easy installation. Please take the time to read these instructions carefully before installing your AccuDock.

Check your package carefully to ensure you have all parts and hardware listed below. Should you be missing any of the hardware please contact us.

PARTS LIST

While unpacking, please be sure to not discard any of the parts. Set them aside on a flat surface and ensure all parts are present prior to installation.

Part	Qty	
ADA Transfer Stairs (ACC-TRF)	1	
3/8"-16 x 3-1/4" Hex Bolt with Fender Washer	5	
3/8" Flat Washer	10	
3/8" Lock Washer	5	
3/8"-16 Hex Nut	5	

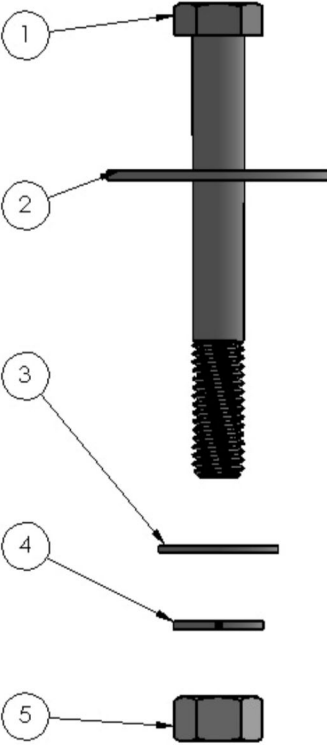
TOOLS NEEDED

Cordless Drill with 3/8" Drill Bit

Wrench

Ratchet with 9/16" Socket

HARDWARE LIST

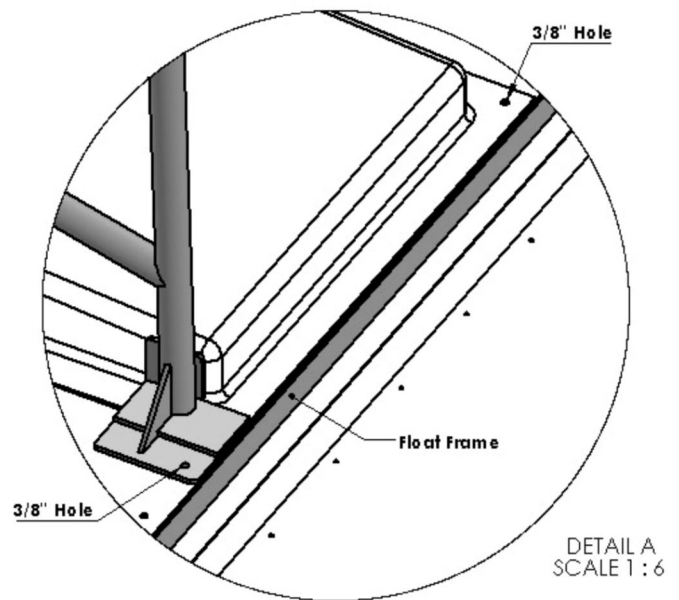
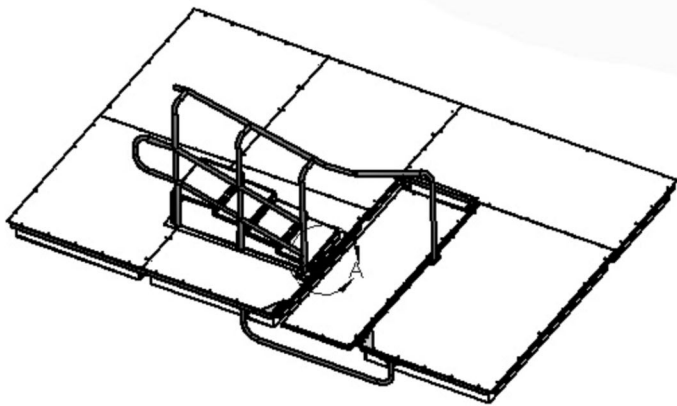


Label	Description
1	3/8"-16 x 3-1/4" Hex Bolt
2	3/8" Fender Washer
3	3/8" Flat Washer
4	3/8" Lock Washer
5	3/8"-16 Hex Nut

STEP ONE

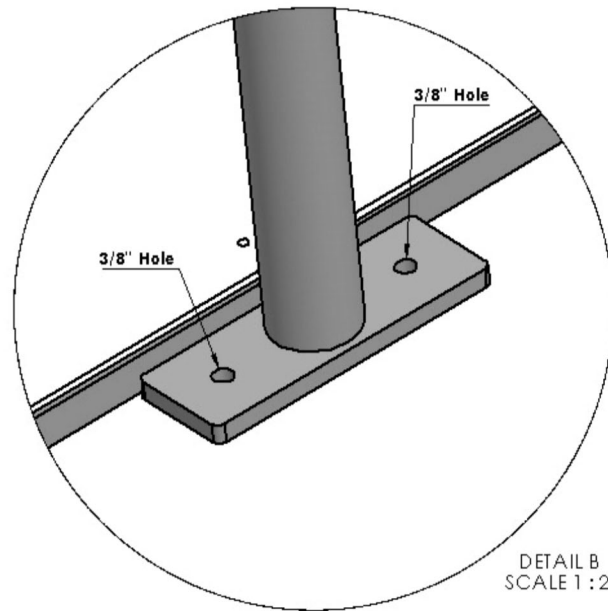
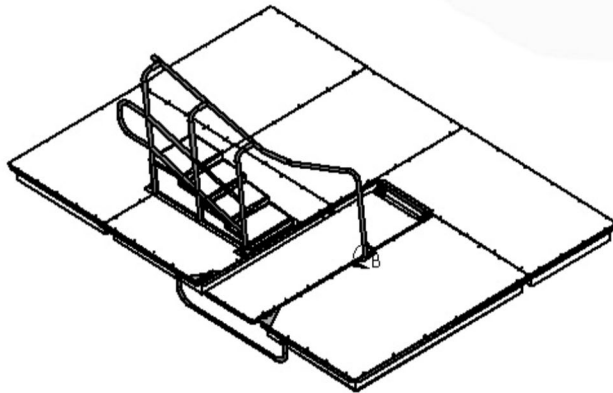
After connecting all the floats, place the ADA transfer stairs in the desired location.

Using a 3/8" drill bit, drill through the aluminum foot pad and the fiberglass lip of the stairs. The holes should go all the way through the float frame. Be sure that the holes will not interfere with any pre-existing hardware before drilling. See Detail A.



STEP TWO

Using a 3/8" drill bit, drill through the pre-existing holes in the aluminum foot pad. These holes should go all the way through the float frame. Be sure that the holes will not interfere with any pre-existing hardware before drilling. See Detail B.

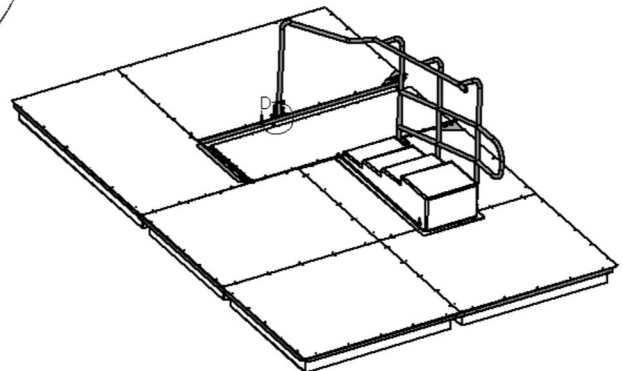
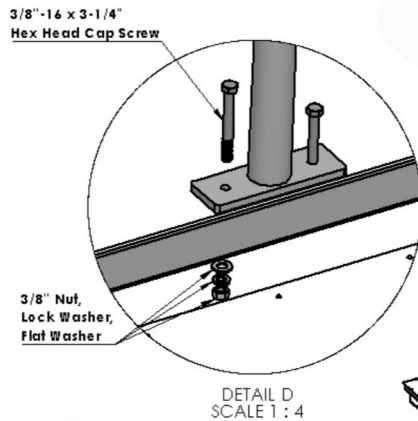
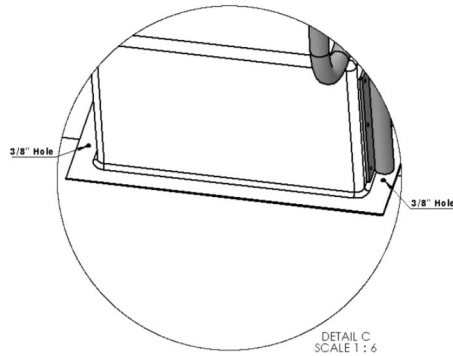
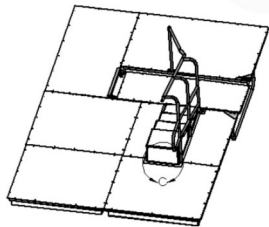


STEP THREE

Using a 3/8" drill bit, drill through the fiberglass lip of the stairs. These holes should go all the way through the float frame. Be sure that the holes will not interfere with any pre-existing hardware before drilling. See Detail C.

Note: It is important to make sure that the holes line up with the float frame before drilling.

Next, insert 3/8"-16 x 3-1/4" hex head cap screws and secure them underneath the float frame with a flat washer, lock washer, and 3/8" hex nut. See Detail D.

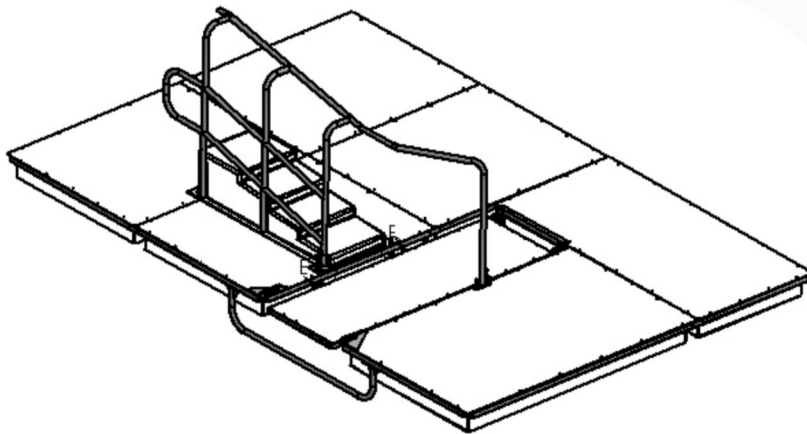


STEP FOUR

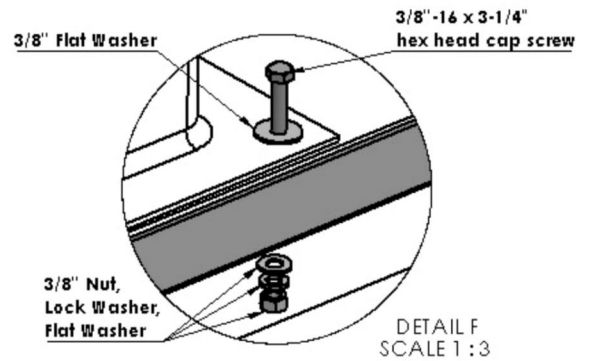
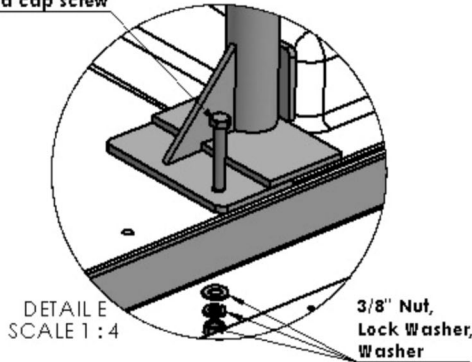
Insert 3/8"-16 x 3-1/4" hex head cap screws into all the drilled holes and secure them underneath the float frame with a flat washer, lock washer, and 3/8" nut.

The bolts inserted through the fiberglass lip of the stairs should have fender washers as shown in Detail F.

Be sure to tighten all of your bolts and inspect your work.



3/8"-16 x 3-1/4"
hex head cap screw

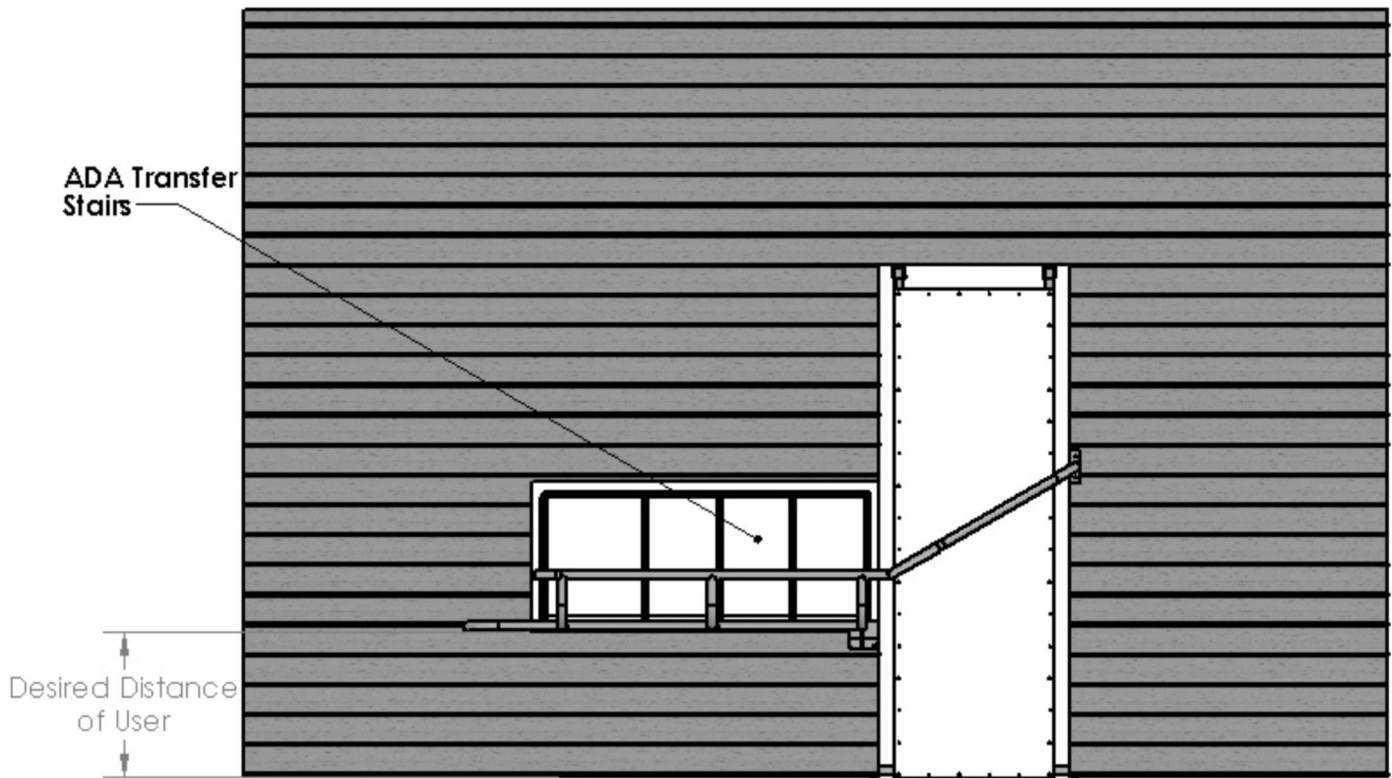




FOR MORE INFORMATION CALL 954.785.7557 OR
EMAIL SALES@ACCUDOCK.COM
WWW.ACCUDOCK.COM



INSTALLATION INSTRUCTIONS



ADA Transfer Stairs to Decked Dock

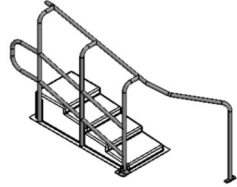




BEFORE INSTALLATION

Thank you for your purchase with AccuDock. Our products have been constructed for durability and designed for easy installation. Please take the time to read these instructions carefully before installing your AccuDock.

Check your package carefully to ensure you have all parts and hardware listed below. Should you be missing any of the hardware please contact us.

PARTS LIST

While unpacking, please be sure to not discard any of the parts. Set them aside on a flat surface and ensure all parts are present prior to installation.

Part	Qty	
ADA Transfer Stairs (ACC-TRF)	1	
3/8"-16 x 5- 1/2" Hex Bolt with Fender Washer	5	
3/8" Flat Washer	10	
3/8" Lock Washer	5	
3/8"-16 Hex Nut	5	

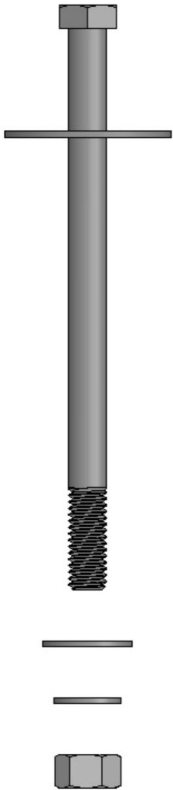
TOOLS NEEDED

Cordless Drill with 3/8" Drill Bit

Wrench

Ratchet with 9/16" Socket

HARDWARE LIST

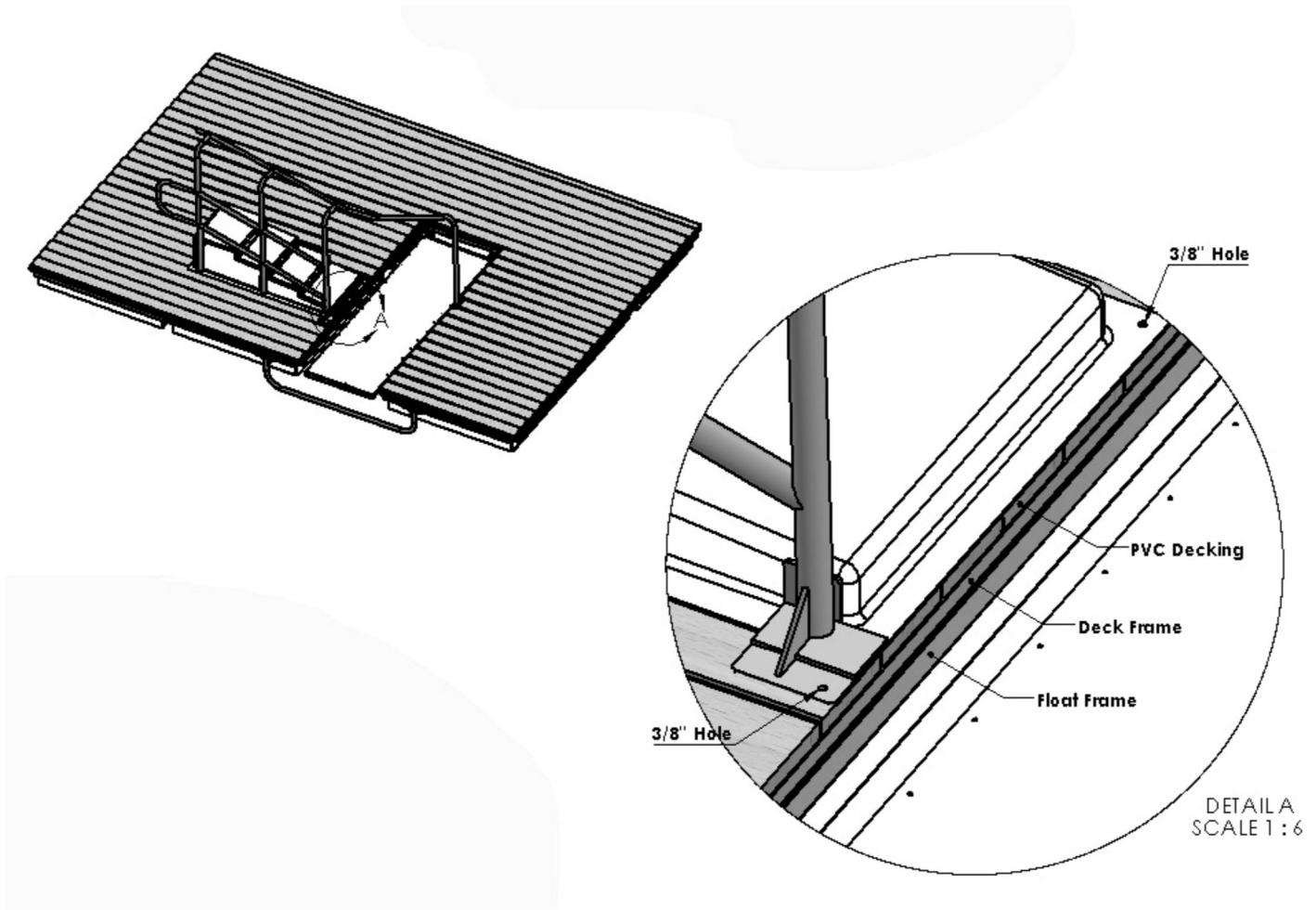


Label	Description
1	3/8"-16 x 5- 1/2" Hex Bolt
2	3/8" Fender Washer
3	3/8" Flat Washer
4	3/8" Lock Washer
5	3/8"-16 Hex Nut

STEP ONE

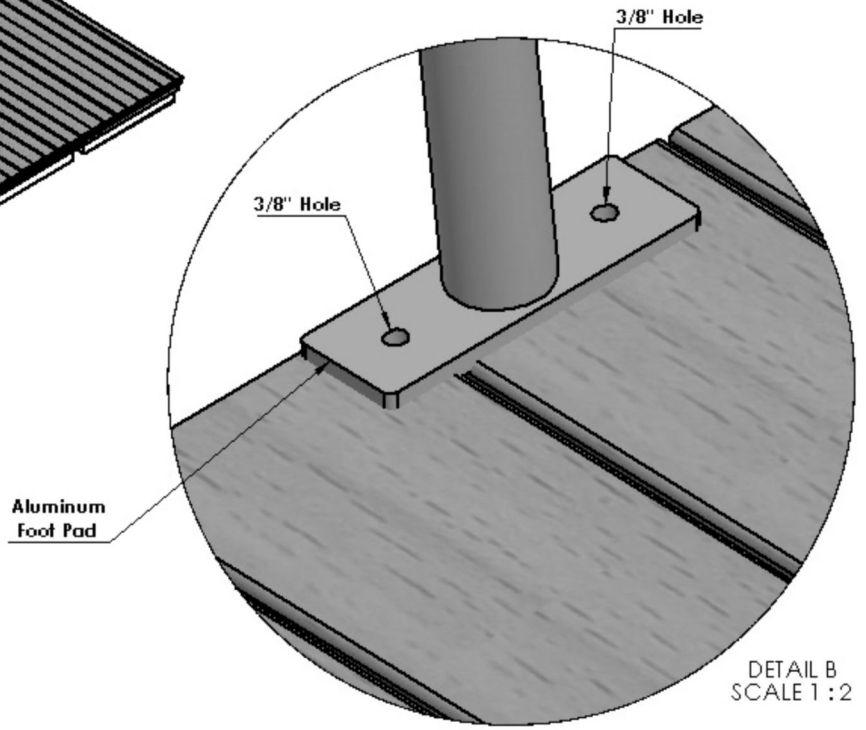
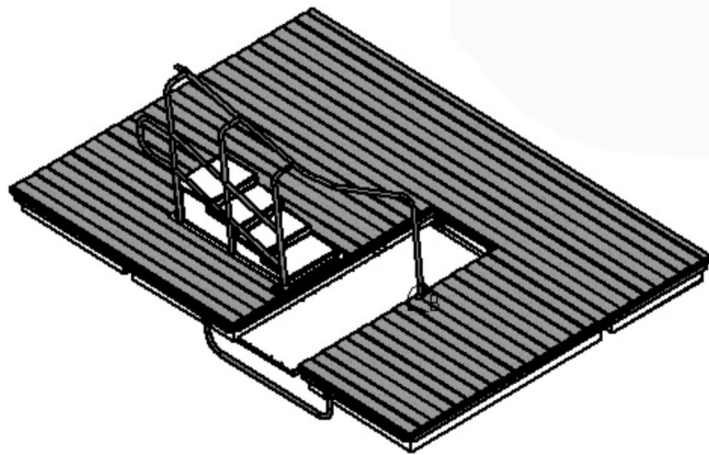
After connecting all the floats, place the ADA transfer stairs in the desired location.

Using a 3/8" drill bit, drill thru all holes beginning with the aluminum foot pad and the fiberglass lip of the stairs, and ending with the aluminum float frame. Be sure that the holes will not interfere with any pre-existing hardware before drilling. See Detail A.



STEP TWO

Using a 3/8" drill bit, drill thru all holes using the pre-existing holes in the aluminum foot pad. Be sure that the holes will not interfere with any pre-existing hardware before drilling. See Detail B.

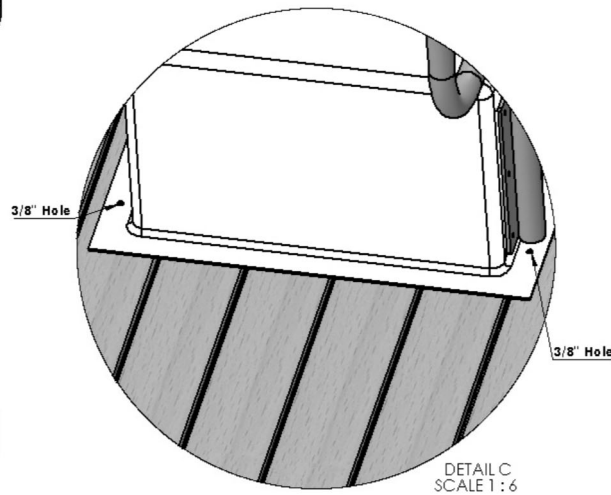
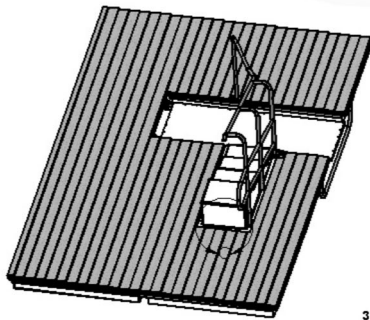


STEP THREE

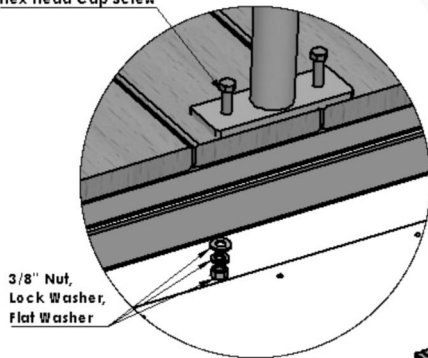
Using a 3/8" drill bit, drill thru all the holes beginning with the fiberglass lip of the stairs and ending with the aluminum float frame. Be sure that the holes will not interfere with any pre-existing hardware before drilling. See Detail C.

Note: Make sure that the holes line up with the float frame before drilling.

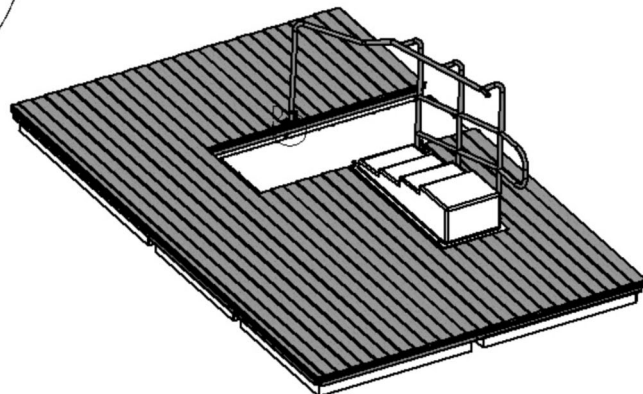
Next, insert 3/8"-16 x 5-1/2" hex head cap screws and secure them underneath the float frame with a flat washer, lock washer, and 3/8" hex nut. See Detail D.



3/8"-16 x 5-1/2"
Hex Head Cap Screw



DETAIL D
SCALE 1 : 4

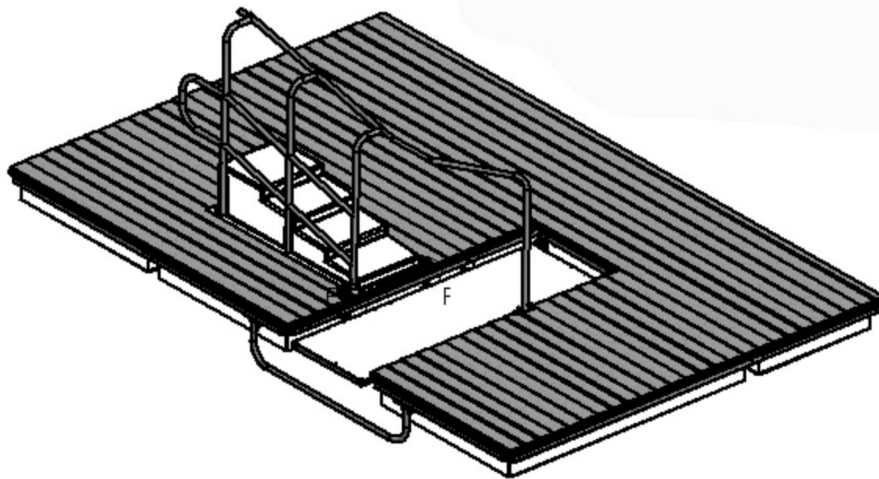


STEP FOUR

Insert 3/8"-16 x 5-1/2" hex head cap screws into all the drilled holes (6x) and secure them underneath the float frame with a flat washer, lock washer, and 3/8" nut.

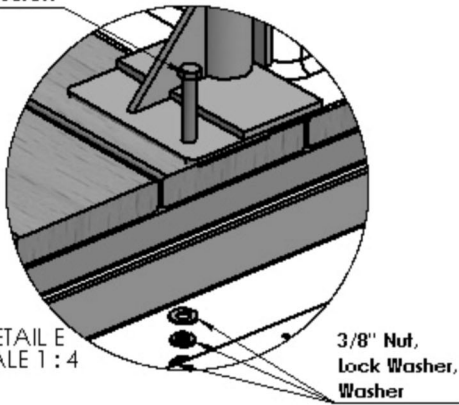
Note: The bolts inserted through the fiberglass lip of the stairs should have fender washers as shown in detail F.

Be sure to tighten all of your bolts and inspect your work.



3/8" - 16 x 5-1/2"
hex head cap screw

DETAIL E
SCALE 1 : 4



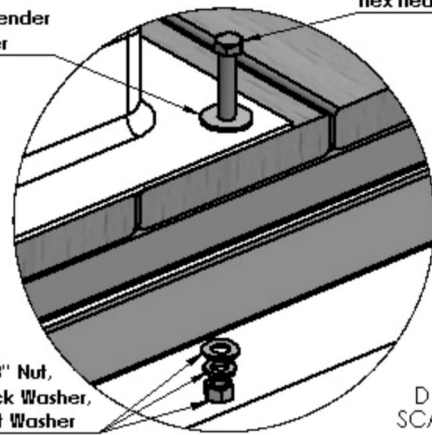
3/8" Nut,
Lock Washer,
Washer

3/8" Fender
Washer

3/8" - 16 x 5-1/2"
hex head cap screw

3/8" Nut,
Lock Washer,
Flat Washer

DETAIL F
SCALE 1 : 3





FOR MORE INFORMATION CALL 954.785.7557 OR
EMAIL SALES@ACCUDOCK.COM
WWW.ACCUDOCK.COM